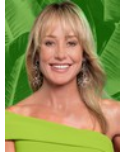




Andrew Pearse
Principal Property Practitioner
Registered with PPRA
(FFC 023 387 4)
083 6528888
andrew@platinum.co.za



Melanie Pearse
Non-Principal Property Practitioner
Registered with PPRA
(FFC 023 996 3)
083 3900000
melanie@platinum.co.za



Annalize Morris
Non-Principal Property Practitioner
Registered with PPRA
(FFC 121 984 9)
082 3477305
annalize@platinum.co.za

Contact Platinum Office

011 8058888

91 Carlswald Estate
Walton Road
Carlswald
Midrand
1684

SOLD



SOLE MANDATE

Web Ref RL1568



R7,299,000

Monthly Bond Repayment R75,339.43
Calculated over 20 years at 11% with no deposit.

Transfer Costs R672,118.00 **Bond Costs** R75,285.00
These calculations are only a guide. Please ask your conveyancer for exact calculations.

5 3 4

Monthly Levy R4,201 **Monthly Rates** R4,624

SPACIOUS 5 BED INDUSTRIAL STYLE HOME - READY TO GO!

This modern home with metal cladding and an imposing exterior is something different - lots of glass, grey walls, exposed I-beams and stone features. Minimalist in design, the contemporary urban style features open concept living and is truly a blank canvas on which to unleash your creative flair!

The entrance is flanked by two sets of double garages, one of which is extra deep for more storage. Through the front door, the double volume space features glass panes from floor to roof level, with views across the garden and pool. An exposed brick feature wall provides a backdrop for the steel and wood staircase. From this bright and airy dining area space, the kitchen, with grey granite tops and a large central island, is found to the left. The SMEG cooker and extractor fan accentuate the polished industrial look, with brushed...

Features

Pets Allowed		Yes			
Interior		Exterior		Sizes	
Bedrooms	5	Garages	4	Floor Size	434m ²
Bathrooms	3	Security	Yes	Land Size	1,115m ²
Kitchens	1	Dom. Accom.	1		
Recep. Rooms	3	Pool	Yes		
Furnished	No	Views	True		

