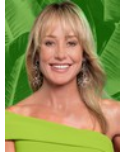




Andrew Pearse
Principal Property Practitioner
Registered with PPRA
(FFC 023 387 4)
083 6528888
andrew@platinum.co.za



Melanie Pearse
Non-Principal Property Practitioner
Registered with PPRA
(FFC 023 996 3)
083 3900000
melanie@platinum.co.za



Annalize Morris
Non-Principal Property Practitioner
Registered with PPRA
(FFC 121 984 9)
082 3477305
annalize@platinum.co.za

Contact Platinum Office

011 8058888

91 Carlswald Estate
Walton Road
Carlswald
Midrand
1684



SOLE MANDATE

Web Ref RL2164



R4,999,000

Monthly Bond Repayment R51,599.10
Calculated over 20 years at 11% with no deposit.

Transfer Costs R402,235.00 **Bond Costs** R61,035.00
These calculations are only a guide. Please ask your conveyancer for exact calculations.

Monthly Levy R3,094

3 3 2

CHARMING 3-BED DOUBLE STOREY FAMILY HOME

Modern and neat, this lovely family home has clean lines and an artistic flair, a perfect starter home or for those wanting to downsize. Located on the edge of the Waterfall Village Estate, the home is quiet and peaceful. Exterior face brick feature walls and high, pitched ceilings with exposed timbers blend well to bring a smart contemporary feel.

The open plan living area extends the length of the ground floor, incorporating kitchen, dining, and lounge. The double garage has a door leading into the kitchen, which is a bright, glossy white and walnut arrangement, overlooking the dining area. The central counter offers casual dining options, also housing the gas-electric cooker. Ample cupboard space is supplemented by additional storage in the separate scullery, which leads out to the back yard. The dining area features a...

Features

Pets Allowed Yes

Interior

Bedrooms 3
Bathrooms 3
Kitchens 1
Recep. Rooms 2
Furnished No

Exterior

Garages 2
Carports / Parkings 2
Security Yes
Pool No
Views True

Sizes

Floor Size 243m²
Land Size 520m²

Extras

Air Conditioner Fireplace

