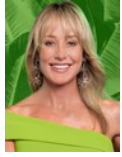




Andrew Pearse
Principal Property Practitioner
Registered with PPRA (FFC 023 387 4)
083 6528888
andrew@platinum.co.za



Melanie Pearse
Non-Principal Property Practitioner
Registered with PPRA (FFC 023 996 3)
083 3900000
melanie@platinum.co.za



Annalize Morris
Non-Principal Property Practitioner
Registered with PPRA (FFC 121 984 9)
082 3477305
annalize@platinum.co.za

Contact Platinum Office

011 8058888

91 Carlswald Estate
Walton Road
Carlswald
Midrand
1684



SOLE MANDATE

Web Ref RL2137



R6,299,000

Monthly Bond Repayment R65,017.55
Calculated over 20 years at 11% with no deposit.

Transfer Costs R556,656.00 **Bond Costs** R70,535.00
These calculations are only a guide. Please ask your conveyancer for exact calculations.

Monthly Levy R3,357

🛏️ 4 🚿 2.5 🚗 2

STYLISH 4-BED MODERN HOME OF HIGH QUALITY

ON SHOW, SATURDAY THE 01ST OF MARCH FROM 11:00 TO 14:00
Contact Annalize Morris for an appointment to view

Not your run-of-the-mill home, this greenbelt property is minimalist in design, with stylish functionality. Double glazed doors and windows imported from Germany, as well as solid wood floors and cathedral ceilings, produce a design that is pleasing with noticeable quality.

The entrance, flanked by large glass panes, leads into an entrance hall that opens to the patio and pool deck. Clean lines are emphasized by the abundant natural light and uncluttered spaces. The living area is to the left, an open plan space with a dramatic pitched ceiling incorporating kitchen, dining and lounge. The Bulthaup kitchen is an interesting concept, with an organisational principle centred around a multi-purpose work bench, including a...

Features

Pets Allowed Yes

Interior
Bedrooms 4
Bathrooms 2.5
Kitchens 1
Recep. Rooms 2
Furnished No

Exterior
Garages 2
Carports / Parkings 4
Security Yes
Dom. Accom. 1
Pool Yes
Views True

Sizes
Floor Size 285m²
Land Size 653m²

Extras

Double Glazed Doors and Windows Wooden Floors Fireplace Aluminium Roller Shutter Gaggenau Appliances

