



**Andrew Pearse**  
Principal Property Practitioner  
Registered with PPRA (FFC 023 387 4)  
083 6528888  
andrew@platinum.co.za



**Melanie Pearse**  
Non-Principal Property Practitioner  
Registered with PPRA (FFC 023 996 3)  
083 3900000  
melanie@platinum.co.za



**Annalize Morris**  
Non-Principal Property Practitioner  
Registered with PPRA (FFC 121 984 9)  
082 3477305  
annalize@platinum.co.za

Contact Platinum Office

011 8058888

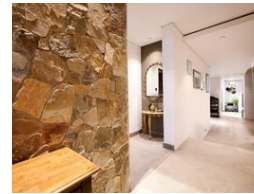
91 Carlswald Estate  
Walton Road  
Carlswald  
Midrand  
1684

SOLD



SOLE MANDATE

Web Ref RL1676



**R7,799,000**

**Monthly Bond Repayment** R80,500.37  
Calculated over 20 years at 11% with no deposit.

**Transfer Costs** R727,118.00 **Bond Costs** R75,285.00  
These calculations are only a guide. Please ask your conveyancer for exact calculations.

**Monthly Levy** R2,843

🛏 5 🚿 5 🚗 3

### MODERN FAMILY HOME WITH GREAT VIEWS

Located in an elevated position, affording superb views over the greenbelt, this contemporary four-bed home is spacious and practical. In a palette of grey, brown wood and black, the screeded floors and cement wash feature walls create a bold and streamlined appearance, that is also bright and welcoming. Rock clad walls and double volume spaces accentuate the height and flow, with numerous stacking doors that blend the boundaries to outdoors.

A bedroom (or study), opening onto a neat courtyard, is located to the left of the entrance, alongside a bathroom with shower. Down a few steps, the dining room is large and airy, with sliding doors for an al fresco feel. A few more steps down take you into the open plan kitchen and lounge. The kitchen is centred around a marble topped island, with an induction stove, and features all...

### Features

**Pets Allowed** Yes

#### Interior

Bedrooms	5
Bathrooms	5
Kitchens	1
Recep. Rooms	3
Furnished	No

#### Exterior

Garages	3
Security	Yes
Dom. Accom.	1
Pool	Yes
Views	False

#### Sizes

Floor Size	502m <sup>2</sup>
Land Size	672m <sup>2</sup>

