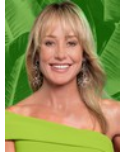




Andrew Pearse
Principal Property Practitioner
Registered with PPRA (FFC 023 387 4)
083 6528888
andrew@platinum.co.za



Melanie Pearse
Non-Principal Property Practitioner
Registered with PPRA (FFC 023 996 3)
083 3900000
melanie@platinum.co.za



Annalize Morris
Non-Principal Property Practitioner
Registered with PPRA (FFC 121 984 9)
082 3477305
annalize@platinum.co.za

Contact Platinum Office

011 8058888

91 Carlswald Estate
Walton Road
Carlswald
Midrand
1684



R6,999,000

Monthly Bond Repayment R72,242.87
Calculated over 20 years at 11% with no deposit.

Transfer Costs R633,656.00 **Bond Costs** R70,535.00
These calculations are only a guide. Please ask your conveyancer for exact calculations.

Monthly Levy R2,594 **Monthly Rates** R4,144

5 4.5 2

DELIGHTFUL FIVE BED FAMILY HOME ON THE GREENBELT

VIEW BY APPOINTMENT ONLY!

Clean lines and a minimalist approach characterise this lovely home, located on one of the estate's many greenbelts. Tastefully decorated in pale grey and white, it exudes peace and calm - a tranquil haven.

Entering through the double front doors, the open plan living area reveals the garden and greenbelt beyond, through the tall windows and sliding doors. The lounge, with textured grey feature wall, opens to the sparkling pool and garden, as does the dining area. A Scandinavian closed combustion fireplace warms the entire living area, with the pale wood laminate flooring throughout the majority of the home, accentuating its contemporary look.

The kitchen features a wood-top central island, perfect for food preparation and meals on the go. The stone countertops and dark grey cupboards wrap...

Features

Pets Allowed Yes

Interior	
Bedrooms	5
Bathrooms	4.5
Kitchens	1
Recep. Rooms	4
Studies	2
Furnished	No

Exterior	
Garages	2
Security	Yes
Dom. Accom.	1
Pool	Yes
Views	True

Sizes	
Floor Size	404m ²
Land Size	683m ²

