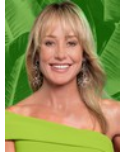




**Andrew Pearse**  
Principal Property Practitioner  
Registered with PPRA  
(FFC 023 387 4)  
083 6528888  
andrew@platinum.co.za



**Melanie Pearse**  
Non-Principal Property Practitioner  
Registered with PPRA  
(FFC 023 996 3)  
083 3900000  
melanie@platinum.co.za



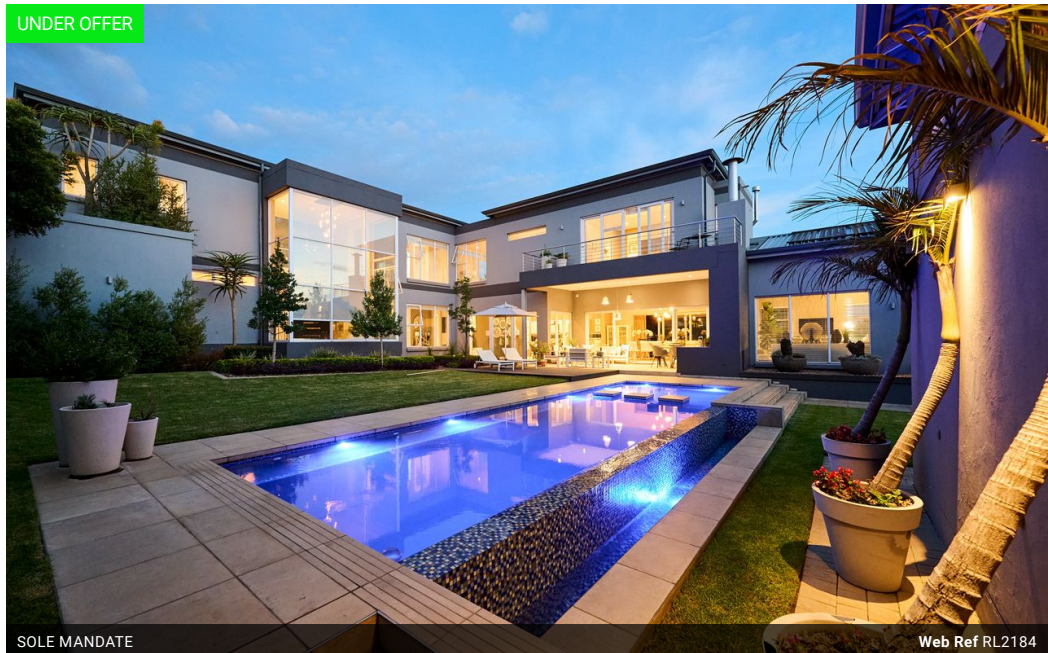
**Annalize Morris**  
Non-Principal Property Practitioner  
Registered with PPRA  
(FFC 121 984 9)  
082 3477305  
annalize@platinum.co.za

Contact Platinum Office

011 8058888

91 Carlswald Estate  
Walton Road  
Carlswald  
Midrand  
1684

UNDER OFFER



SOLE MANDATE

Web Ref RL2184



R12,299,000

**Monthly Bond Repayment** R126,948.85  
Calculated over 20 years at 11% with no deposit.

**Transfer Costs** R1,250,642.00 **Bond Costs** R99,035.00  
These calculations are only a guide. Please ask your conveyancer for exact calculations.

🛏️ 4 🚿 4.5 🚗 3

**Monthly Levy** R4,960 **Monthly Rates** R5,867

### SUMPTUOUS LIVING IN THIS SPACIOUS HOME WITH COTTAGE

Ideally located alongside one of the greenbelt pathways, this vast family home has so much to offer! Contemporary design with clear symmetry accentuates the natural light and welcoming open spaces. Immaculate and well laid out, the use of decked pathways, I-beam supports and patios or balconies on both sides of the home facilitate the seamless flow.

The entrance, nestling between the double and single garages, leads into a bright, double-volume hallway with the elegant, floating staircase opposite, revealing the beautiful garden and pool through the floor-to-ceiling glass. To the left, the guest bedroom with en-suite is quiet and private, with a corner window overlooking the front garden. The grand open-plan living area begins with a gourmet kitchen dazzling in sleek, glossy white cabinetry. A central island houses the gas...

### Features

**Pets Allowed** Yes

#### Interior

Bedrooms 4  
Bathrooms 4.5  
Kitchens 1  
Recep. Rooms 4  
Furnished No

#### Exterior

Garages 3  
Carports / Parkings 3  
Security Yes  
Dom. Accom. 1  
Pool Yes  
Views True

#### Sizes

Floor Size 628m<sup>2</sup>  
Land Size 1,239m<sup>2</sup>

#### Extras

Green Belt Air Conditioner Fireplace Flatlet Atrium Inverter

