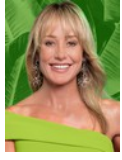




Andrew Pearse
Principal Property Practitioner
Registered with PPRA
(FFC 023 387 4)
083 6528888
andrew@platinum.co.za



Melanie Pearse
Non-Principal Property Practitioner
Registered with PPRA
(FFC 023 996 3)
083 3900000
melanie@platinum.co.za



Annalize Morris
Non-Principal Property Practitioner
Registered with PPRA
(FFC 121 984 9)
082 3477305
annalize@platinum.co.za

Contact Platinum Office

011 8058888

91 Carlswald Estate
Walton Road
Carlswald
Midrand
1684

UNDER OFFER



Web Ref RL2162



R9,200,000

5 5.5 2

Monthly Bond Repayment R94,961.33
Calculated over 20 years at 11% with no deposit.

Transfer Costs R892,676.00 **Bond Costs** R84,785.00
These calculations are only a guide. Please ask your conveyancer for exact calculations.

Monthly Levy R4,960 **Monthly Rates** R5,800

STYLISH 5-BED VILLA

Clean lines and natural light dominate in this newly completed, Dutch design family home. Recognised for its modern European feel, the perfect balance between functionality, aesthetics and individuality is experienced. Based on the wabi sabi principal (where all spaces are related to human size and sightlines, and durable solutions play a huge role), the home is in balance with nature. Industrial steel and glass doors are balanced by herringbone engineered wood flooring in the study and bedrooms, while consistent finishes in bathrooms and bedrooms provide an elegant backdrop for your interior design.

The entrance hall reveals an eye-catching, curving staircase in dazzling white, with a built-in closet for coats and shoes. The living area begins with the kitchen and dining room, open plan with sliding doors to the garden....

Features

Pets Allowed Yes

Interior
Bedrooms 5
Bathrooms 5.5
Kitchens 1
Recep. Rooms 3
Studies 1
Furnished No

Exterior
Garages 2
Carports / Parkings 2
Security Yes
Dom. Accom. 1
Pool Yes
Views True

Sizes
Floor Size 611m²
Land Size 1,250m²

Extras
Fireplace Borehole

