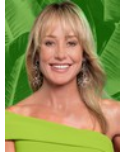




Andrew Pearse
Principal Property Practitioner
Registered with PPRA
(FFC 023 387 4)
083 6528888
andrew@platinum.co.za



Melanie Pearse
Non-Principal Property Practitioner
Registered with PPRA
(FFC 023 996 3)
083 3900000
melanie@platinum.co.za

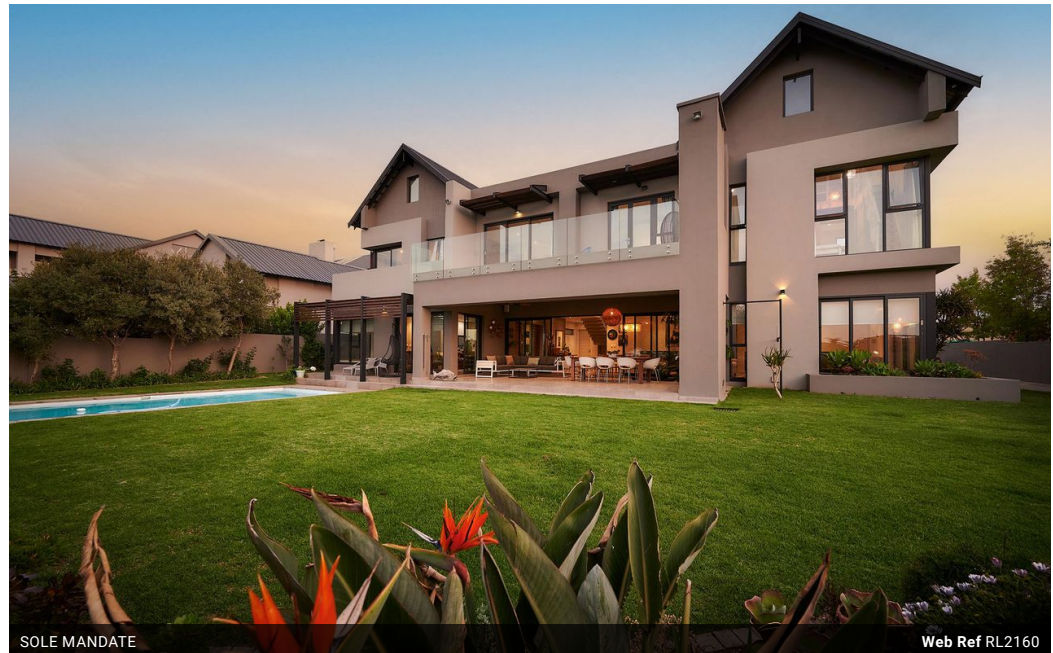


Annalize Morris
Non-Principal Property Practitioner
Registered with PPRA
(FFC 121 984 9)
082 3477305
annalize@platinum.co.za

Contact Platinum Office

011 8058888

91 Carlswald Estate
Walton Road
Carlswald
Midrand
1684



SOLE MANDATE

Web Ref RL2160



R11,999,000

Monthly Bond Repayment R123,852.29
Calculated over 20 years at 11% with no deposit.

Transfer Costs R1,212,179.00 **Bond Costs** R94,285.00

These calculations are only a guide. Please ask your conveyancer for exact calculations.

Monthly Levy R4,960 **Monthly Rates** R6,200

5 5.5 3

CONTEMPORARY 5-BED MARVEL, WITH VIEWS

Located in the top end of the Waterfall Country estate, this spacious family home with a distinctive artistic feel, has a lot to offer. With access to the perimeter running path and mountain bike track, the positioning of this home offers privacy, practicality and style.

A koi pond runs the length of the walkway to the entrance, where a tall wooden door takes you into the double volume entrance hall, with loads of natural light provided by a wall of windows. The open plan living space encompasses a large dining room that opens onto the covered patio via stacking sliding doors. A formal lounge at the end of the house has windows on two sides, overlooking the lush garden. Low floor level windows offer light without compromising privacy or wall space - decidedly different! The herring-bone white Oak flooring throughout offers a...

Features

Pets Allowed Yes

Interior

Bedrooms	5
Bathrooms	5.5
Kitchens	1
Recep. Rooms	4
Studies	1
Furnished	No

Exterior

Garages	3
Carports / Parkings	1
Security	Yes
Dom. Accom.	2
Pool	Yes
Views	True

Sizes

Floor Size	745m ²
Land Size	1,123m ²

Extras

Koi Pond Herringbone Flooring Fireplace Solar Heating Irrigation System Borehole

