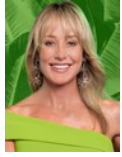




**Andrew Pearse**  
Principal Property Practitioner  
Registered with PPRA (FFC 023 387 4)  
083 6528888  
andrew@platinum.co.za



**Melanie Pearse**  
Non-Principal Property Practitioner  
Registered with PPRA (FFC 023 996 3)  
083 3900000  
melanie@platinum.co.za



**Annalize Morris**  
Non-Principal Property Practitioner  
Registered with PPRA (FFC 121 984 9)  
082 3477305  
annalize@platinum.co.za

Contact Platinum Office

011 8058888

91 Carlswald Estate  
Walton Road  
Carlswald  
Midrand  
1684



SOLE MANDATE

Web Ref RL2135



**R12,999,000**

**Monthly Bond Repayment** R134,174.17  
Calculated over 20 years at 11% with no deposit.

**Transfer Costs** R1,327,642.00 **Bond Costs** R99,035.00  
These calculations are only a guide. Please ask your conveyancer for exact calculations.

**Monthly Levy** R4,960

4 3 6

### CHARMING 4 BED FRENCH-STYLE VILLA

This spacious family home, built in the quintessential French country style, is a feast for the eyes. It incorporates many elements of Provençal architecture and décor: wooden shutters, water features, oversized chandeliers, grand mantles over fireplaces, courtyards with boxed hedges and topiary shrubs, curling wrought iron and exposed beams. The French country style is known for its elegant, easy living, something very present in this delightful home.

The entrance nestles between two double garages, both with extra height, and one with extra depth, providing parking for four cars. The palette is natural and warming, with accents of white featuring on gates and windows. A black and white checkerboard tile effect at the entrance is repeated in several areas of the home, offering an interesting contrast from the pale, smooth and...

### Features

**Pets Allowed** Yes

#### Interior

Bedrooms 4  
Bathrooms 3  
Kitchens 1  
Recep. Rooms 4  
Studies 2  
Furnished No

#### Exterior

Garages 6  
Carports / Parkings 8  
Security Yes  
Dom. Accom. 1.5  
Pool Yes  
Views True

#### Sizes

Floor Size 606m<sup>2</sup>  
Land Size 1,053m<sup>2</sup>

#### Extras

Underfloor Heating Wheelchair Accessible Air Conditioner Wood Storeroom Build-In Speaker  
Garden Storeroom Front Door Camera Fireplace

