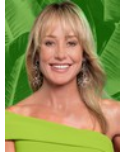




**Andrew Pearse**  
Principal Property Practitioner  
Registered with PPRA (FFC 023 387 4)  
083 6528888  
andrew@platinum.co.za



**Melanie Pearse**  
Non-Principal Property Practitioner  
Registered with PPRA (FFC 023 996 3)  
083 3900000  
melanie@platinum.co.za



**Annalize Morris**  
Non-Principal Property Practitioner  
Registered with PPRA (FFC 121 984 9)  
082 3477305  
annalize@platinum.co.za

Contact Platinum Office

011 8058888

91 Carlswald Estate  
Walton Road  
Carlswald  
Midrand  
1684



SOLE MANDATE

Web Ref RL2055



**R9,950,000**

4 Bedrooms 4.5 Bathrooms 3 Carports

**Monthly Bond Repayment** R102,702.75  
Calculated over 20 years at 11% with no deposit.

**Transfer Costs** R975,176.00 **Bond Costs** R84,785.00  
These calculations are only a guide. Please ask your conveyancer for exact calculations.

**Monthly Levy** R4,960

### EXPANSIVE 4-BED FAMILY HOME ON GREENBELT

Large and lovely, the front of this modern home keeps its secrets in grand style! Three garages flank the enclosed entrance, inviting you into an impressive home with contemporary elements like I-beams, high ceilings and wide expanses of aluminium framed windows and doors, and sleek tiling.

The dining room, with doors opening to the lush garden with well-established trees, flows to the kitchen on the left – a wide, open-plan space that overlooks the TV lounge and covered patio beyond. Walnut and white cabinetry frame the modern kitchen, with pale quartz counters and a waterfall counter island, with seating. The separate scullery and pantry are neatly tucked away, while a double-sided closed-combustion fireplace creates a warming divide between the kitchen and lounge. As in the kitchen, stacking doors opens the area up...

### Features

**Pets Allowed** Yes

**Interior**  
Bedrooms 4  
Bathrooms 4.5  
Kitchens 1  
Recep. Rooms 4  
Furnished No

**Exterior**  
Garages 3  
Carports / Parkings 4  
Security Yes  
Dom. Accom. 1.5  
Pool No  
Views True

**Sizes**  
Floor Size 569m<sup>2</sup>  
Land Size 1,264m<sup>2</sup>

**Extras**  
Fireplace

