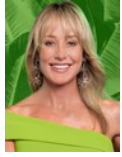




Andrew Pearse
Principal Property Practitioner
Registered with PPRA
(FFC 023 387 4)
083 6528888
andrew@platinum.co.za



Melanie Pearse
Non-Principal Property Practitioner
Registered with PPRA
(FFC 023 996 3)
083 3900000
melanie@platinum.co.za

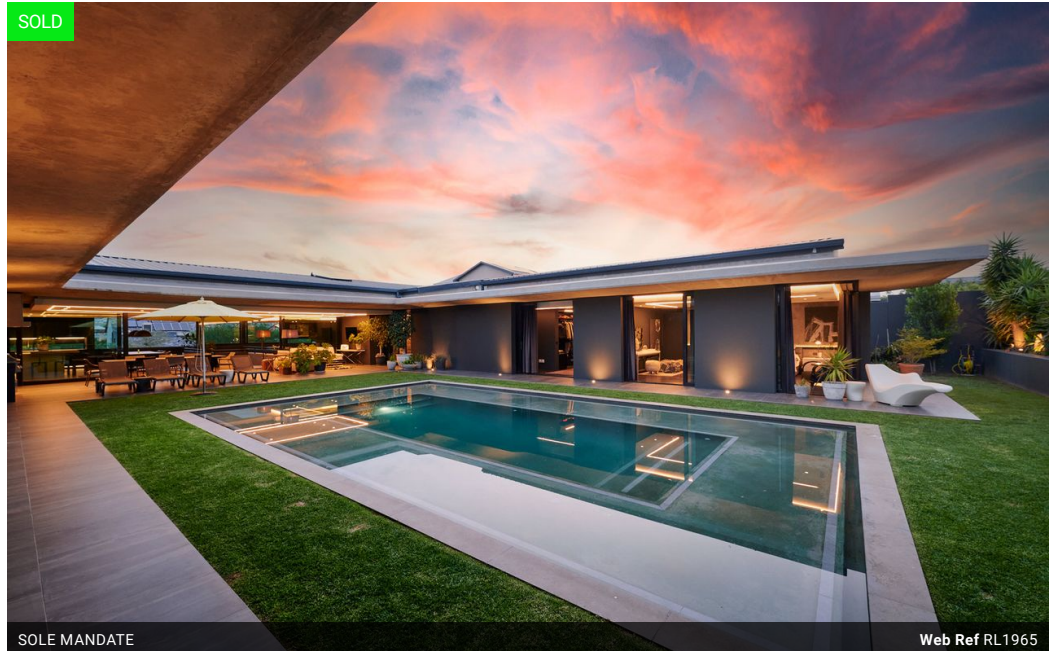


Annalize Morris
Non-Principal Property Practitioner
Registered with PPRA
(FFC 121 984 9)
082 3477305
annalize@platinum.co.za

Contact Platinum Office

011 8058888

91 Carlswald Estate
Walton Road
Carlswald
Midrand
1684



SOLE MANDATE

Web Ref RL1965



R15,999,000

Monthly Bond Repayment R165,139.82
Calculated over 20 years at 11% with no deposit.

Transfer Costs R1,730,391.00 **Bond Costs** R113,285.00
These calculations are only a guide. Please ask your conveyancer for exact calculations.

4 4.5 8

Monthly Levy R4,572

STUNNING MODERN HOME WITH AN 8-CAR GARAGE - A CAR ENTHUSIAST'S DREAM!

STUNNING MODERN HOME WITH AN 8-CAR GARAGE - A CAR ENTHUSIAST'S DREAM!

This sharply defined, minimalist home is ideally suited to the motoring enthusiast or collector. Twin garages open to reveal an impressive tiled space that collectively houses eight cars and a golf cart, with the addition of a storeroom and workshop (or man cave) area. Moving up the floating staircase to the first floor, the overhead skylight dazzles upon entering the extensive open-plan living space – an incredible design that emphasises the bold and striking architecture. The living areas and bedrooms open to the swimming pool courtyard, specifically designed to create seamless integration between the indoors and out. The stark, cutting-edge architecture uses the earthy elements of stone, concrete, metal and glass to beautifully reflect the very best in...

Features

Pets Allowed Yes

Interior

Bedrooms 4
Bathrooms 4.5
Kitchens 1
Recep. Rooms 3
Studies 1
Furnished No

Exterior

Garages 8
Carports / Parkings 4
Security Yes
Dom. Accom. 1
Pool Yes
Views True

Sizes

Floor Size 815m²
Land Size 1,300m²

Extras

Boma Fireplace Solar Heating Inverter Water Tanks Pizza Oven

