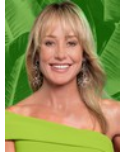




Andrew Pearse
Principal Property Practitioner
Registered with PPRA (FFC 023 387 4)
083 6528888
andrew@platinum.co.za



Melanie Pearse
Non-Principal Property Practitioner
Registered with PPRA (FFC 023 996 3)
083 3900000
melanie@platinum.co.za



Annalize Morris
Non-Principal Property Practitioner
Registered with PPRA (FFC 121 984 9)
082 3477305
annalize@platinum.co.za

Contact Platinum Office

011 8058888

91 Carlswald Estate
Walton Road
Carlswald
Midrand
1684



SOLE MANDATE

Web Ref RL1928



R13,499,000

Monthly Bond Repayment R139,335.11
Calculated over 20 years at 11% with no deposit.

Transfer Costs R1,391,884.00 **Bond Costs** R103,785.00
These calculations are only a guide. Please ask your conveyancer for exact calculations.

Monthly Levy R4,960

5 4 4

STUNNING CONTEMPORARY 5-BED ON GREENBELT

Well placed on one of the finest greenbelts of the estate, this modern family home offers spacious rooms and flowing living areas, all with views across the Waterfall Valley. Clean lines and large areas of glass blend to create a bright and airy home, with a crisp up-to-date aesthetic.

Arriving through the lush courtyard garden, the double volume entrance hall offers a first peek at the views. One of the guest suites is located to the right, offering privacy and quiet away from the living areas. Overlooking the pool and garden, this lovely suite is sunny and secluded. The open plan living area begins with a formal lounge, alongside the spacious dining area and kitchen. Wide doors slide back to reveal the gorgeous turquoise tiled pool and deck, offering an expanse of entertaining space. The kitchen is a calming blend of white...

Features

Pets Allowed Yes

Interior		Exterior		Sizes	
Bedrooms	5	Garages	4	Floor Size	688m ²
Bathrooms	4	Security	Yes	Land Size	1,308m ²
Kitchens	1	Pool	Yes		
Recep. Rooms	3	Views	True		
Furnished	No				

Extras

Inverter Back-up Batteries Solar Heating Underfloor Heating Home Automation Distributed Audio Central Vacuum System Cellar Bar Automated Blinds

