

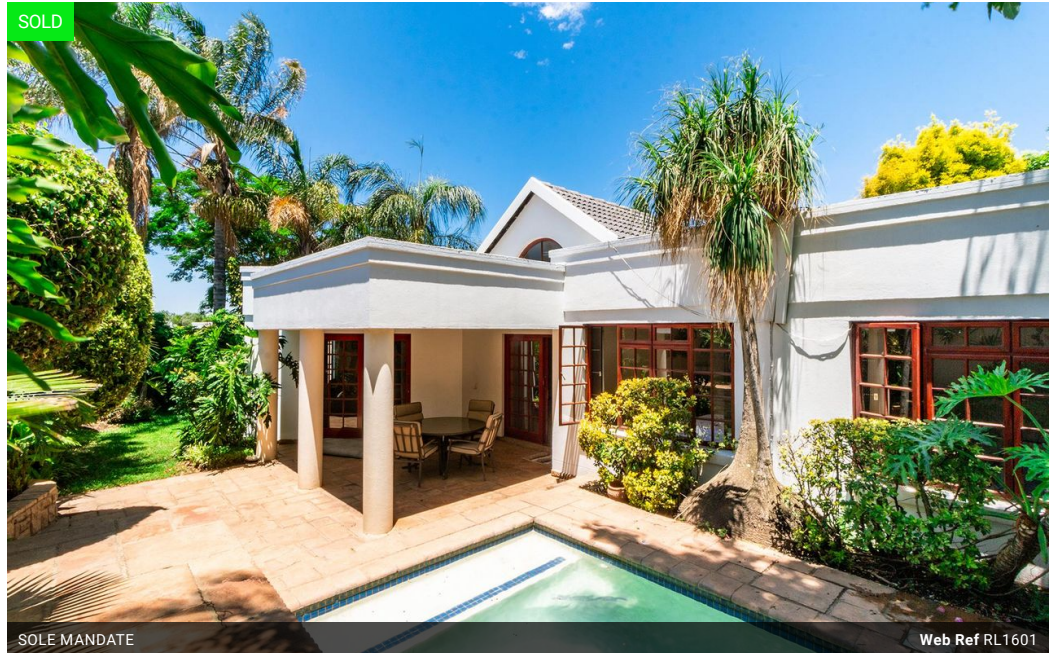


**Steven McLaren**  
 Non-Principal Property Practitioner  
 Registered with PPRA (FFC 114 128 9)  
 083 2338888  
 steven@platinum.co.za

Contact Platinum Office

011 8058888

91 Carlswald Estate  
 Walton Road  
 Carlswald  
 Midrand  
 1684



SOLE MANDATE

Web Ref RL1601



R1,999,999

2 2 2

**Monthly Bond Repayment** R20,643.76  
 Calculated over 20 years at 11% with no deposit.

**Transfer Costs** R75,205.94 **Bond Costs** R32,760.00  
 These calculations are only a guide. Please ask your conveyancer for exact calculations.

**Monthly Levy** R1,500 **Monthly Rates** R905

## 2 bedroom full title cluster - Regent's Hill, Halfway Gardens, Midrand

This beautiful home is located in Regent's Hill in Halfway Gardens. Regent's Hill is a full title security complex consisting of only 47 homes. The property is in immaculate condition and is ideal for a young couple or someone seeing to downsize into a secure lock-up-and-go environment. The home offers the following features :

- 2 well sized bedrooms, both of which offer built-in cupboards & carpeted floors. Both bedrooms are fitted with air-conditioners.
- 2 neat bathrooms. The guest bathroom offers a shower, while the main en-suite bathroom is fitted with a bathtub & shower.
- Large sunlit lounge provides space for a 3-piece lounge suite & boasts a wood-burning fireplace.
- An open plan dining area is centrally located off of the kitchen & lounge. The dining area offers double volume ceiling & a built-in air...

## Features

**Pets Allowed** Yes

**Interior**  
 Bedrooms 2  
 Bathrooms 2  
 Kitchens 1  
 Recep. Rooms 2  
 Furnished No

**Exterior**  
 Garages 2  
 Security Yes  
 Pool Yes  
 Views No

**Sizes**  
 Floor Size 180m<sup>2</sup>  
 Land Size 449m<sup>2</sup>

**Extras**  
 Built-in Wardrobes Pets Allowed Private Garden Private Pool

