

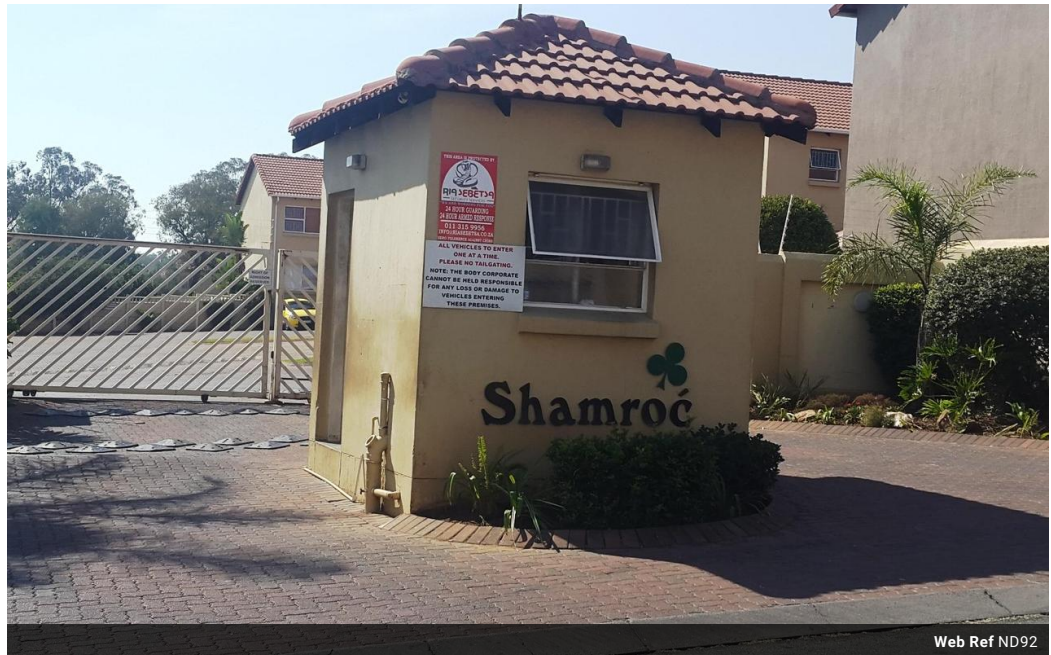


Steven McLaren
 Non-Principal Property Practitioner
 Registered with PPRA
 (FFC 114 128 9)
 083 2338888
 steven@platinum.co.za

Contact Platinum Office

011 8058888

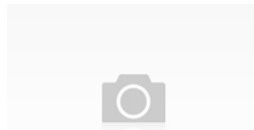
91 Carlswald Estate
 Walton Road
 Carlswald
 Midrand
 1684



Web Ref ND92



Shamroc



Townhouses (112)
 From R560,000
 Size from 68m² to 101m²

Stunning Stater

This terrific complex was built in 2003. It consists of owners and tenants with professional careers. It is in an excellent condition, fully walled and paved with electric fencing and 24 hour controlled access, has carports with ample space for visitor parking, has a pool and braai area and has strict rules with a solid body corporate. It has a multinational community who lives in harmony amongst themselves. The complex is in good financial standings and is run by a reputable complex management agency.

Features

- ✓ Complex fully walled and paved with electric fencing and 24 hour controlled access.
- ✓ This terrific complex is ideal for a starter family and a good investment.
- ✓ The complex also has a pool and braai area. Situated in Vorna Valley, Midrand, a fast moving middle class market. It has easy access to Allandale off ramp and also within close proximity to the Gautrain-Bus route and the New Waterfall Development.

