

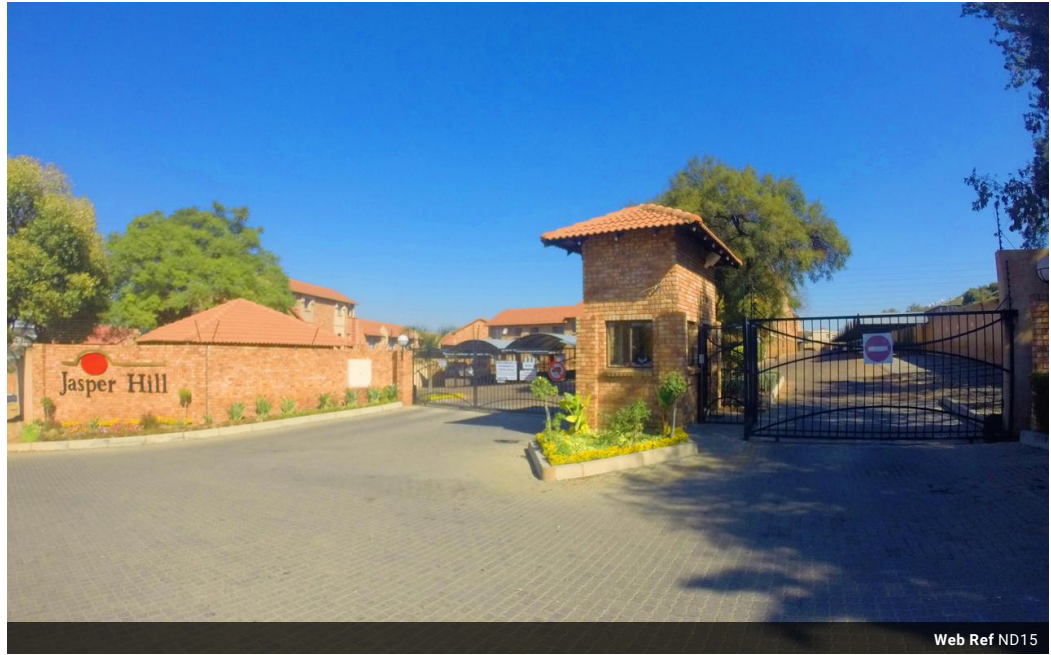


Steven McLaren
Non-Principal Property Practitioner
Registered with PPRA (FFC 114 128 9)
083 2338888
steven@platinum.co.za

Contact Platinum Office

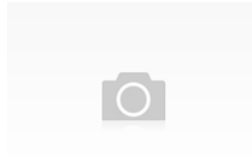
011 8058888

91 Carlswald Estate
Walton Road
Carlswald
Midrand
1684



Web Ref ND15

Jasper Hill



Units (87)
From R385,000
Size from 68m² to 70m²

Residential Estate in Halfway Gardens

Jasper Hill is a klinker brick apartment complex consisting of 87 various sized units. All units come with covered parking. Located within walking distance of schools and shopping centres.

Features

- ✓ Covered parking

